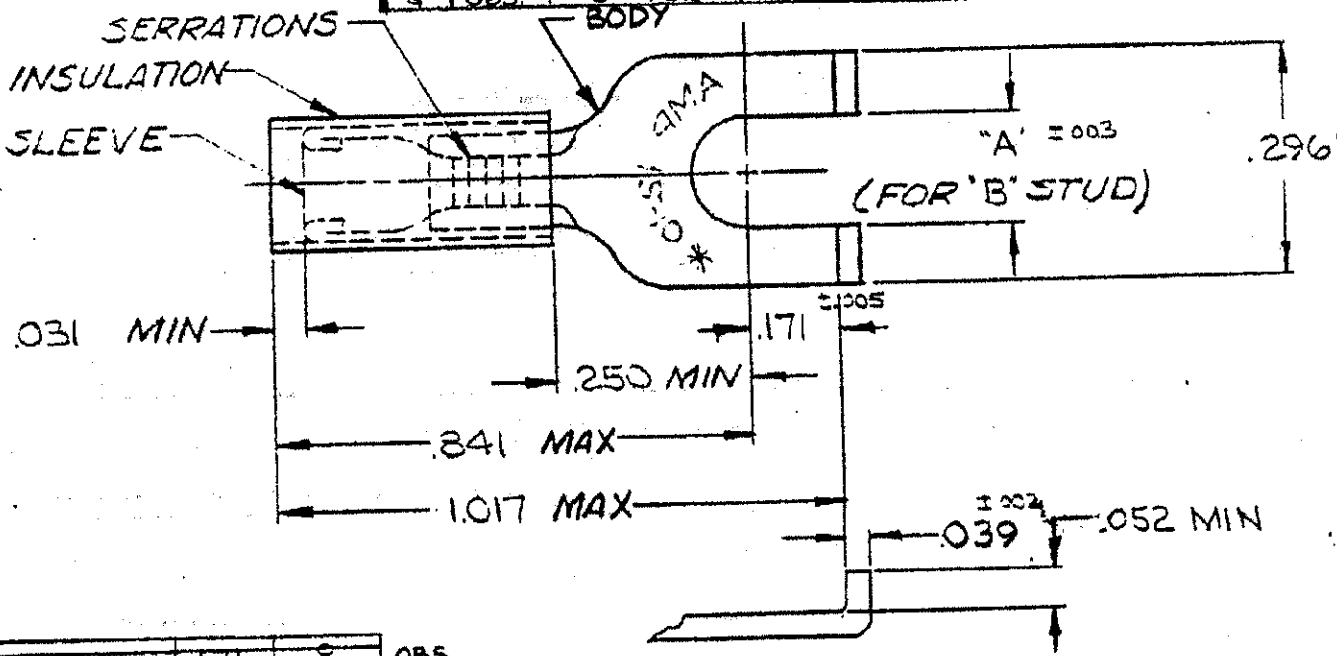


DRAWING MADE IN AMERICAN PROJECTION

© 1958 BY AMP INCORPORATED. ALL RIGHTS RESERVED. AMP PRODUCTS COVERED BY PATENTS AND/OR PATENTS PENDING.

REVISIONS			
LTR	DESCRIPTION	DATE	APPROVED
B	REDRAWN & ADDED TAPE NO'S P-6080 ⁴⁴	5-13-70	<i>Jm</i>
C	REVISED F-636 & P-6925	9-9-74	P. Monahan
D	ADDED 1--1 NPS 76-0059 ¹⁴	2-22-77	LAB.
E	REV PER 6-4732	JT 7/26/88	<i>PAC</i>
F	OBS. 1--1 PER G-3992	DKS 1-31-89	<i>PAC</i>
G	OBS. 1--0 PER G-3782	DKS 3-30-89	GA

H	REV PER G-5646	DKS	MC	1/91
J	REV/0120-0066-93	TO	RE	4-93
K	REACT 1-A 10610-0150-98 E ECR-05-001001	MC		10-2-98



1-325150-0	.145	G
325150		
PART NO.	"A"	"B"

1	WIRE TERMINAL	1-325150-0
1	325150 ON TAPE	1-325150-0
50	LOOSE PC. BOX	3-325150-2
1	WIRE TERMINAL	325150

SLEEVE: COPPER (QQ-C-576)
 BODY: COPPER (QQ-C-576)
 TIN PL (MIL-T-10727)
 INSULATION: NYLON
 COLOR: YELLOW

UNLESS OTHERWISE SPECIFIED DIMENSIONS ARE IN INCHES TOLERANCES ON: DECIMALS = .008 ANGLES = 5°	CONTRACT NO.	
	DR.	5-13-70
	CHK.	5-13-70
	APPD	J. Wabel 5-13-70
	REL	5-13-70
MATERIAL	DSGN/APPD	
SEE TABLE	OTHER APPD	

AMP AMP INCORPORATED
 HARRISBURG, PENNSYLVANIA

NAME: WIRE TERMINAL
 P.I.D.G. - FLANGED SPADE
 WIRE SIZE: 12-10

SIZE	CODE IDENT NO.	NUMBER
A	00779	325150

SCALE: NTS SHEET: 1 OF 1

CUSTOMER DRAWING